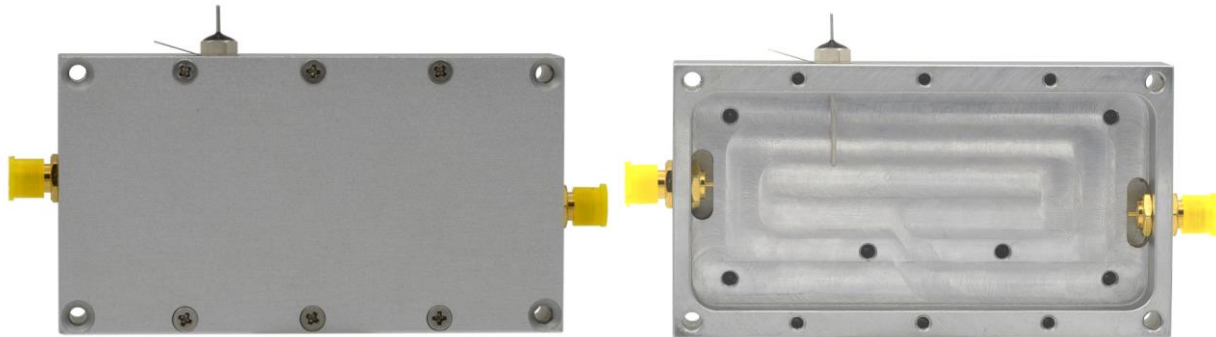


RF HOUSINGS

The TBRFH6 housing is ideal for RF building blocks such as amplifiers or similar. The housing is milled from aluminium and equipped with SMA-female connectors and a feed through capacitor for the power supply line.



TBRFH6

TBRFH6, interior

1 Technical data

Part #	Outer dimensions [mm]	Inner dimensions [mm]	Material	Surface finishing	RF connectors	Detail	Weight [g]
TBRFH6	50 x 91.4 x 18	39.7 x 84.4 x 9.5	Alu A6061	Sandblasted	SMA-Female	Feed through capacitor, 10nF, 50V	180

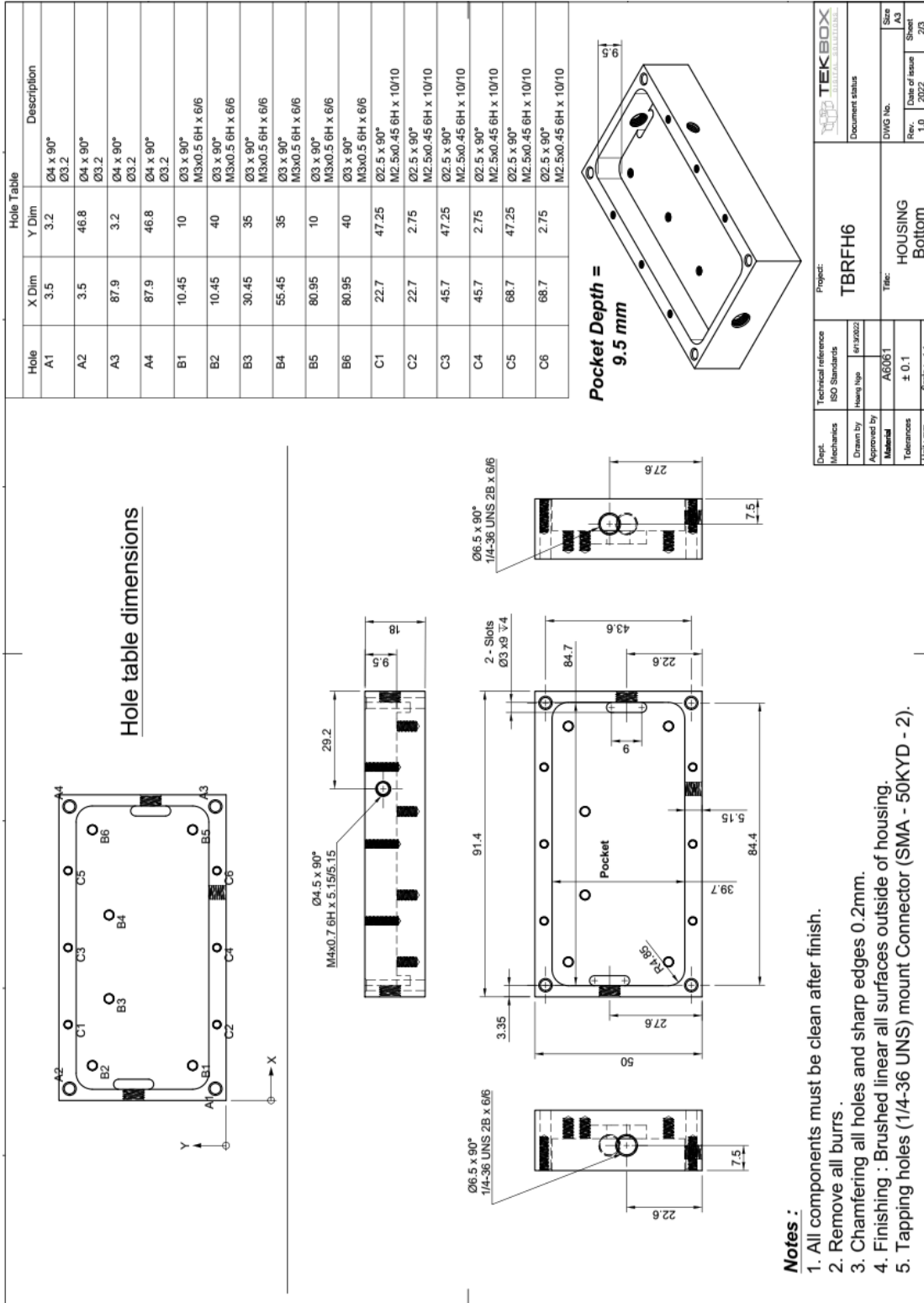
2 Customization

Contact us, if you need customized housings. Following details can be customized, depending on ordering volume:

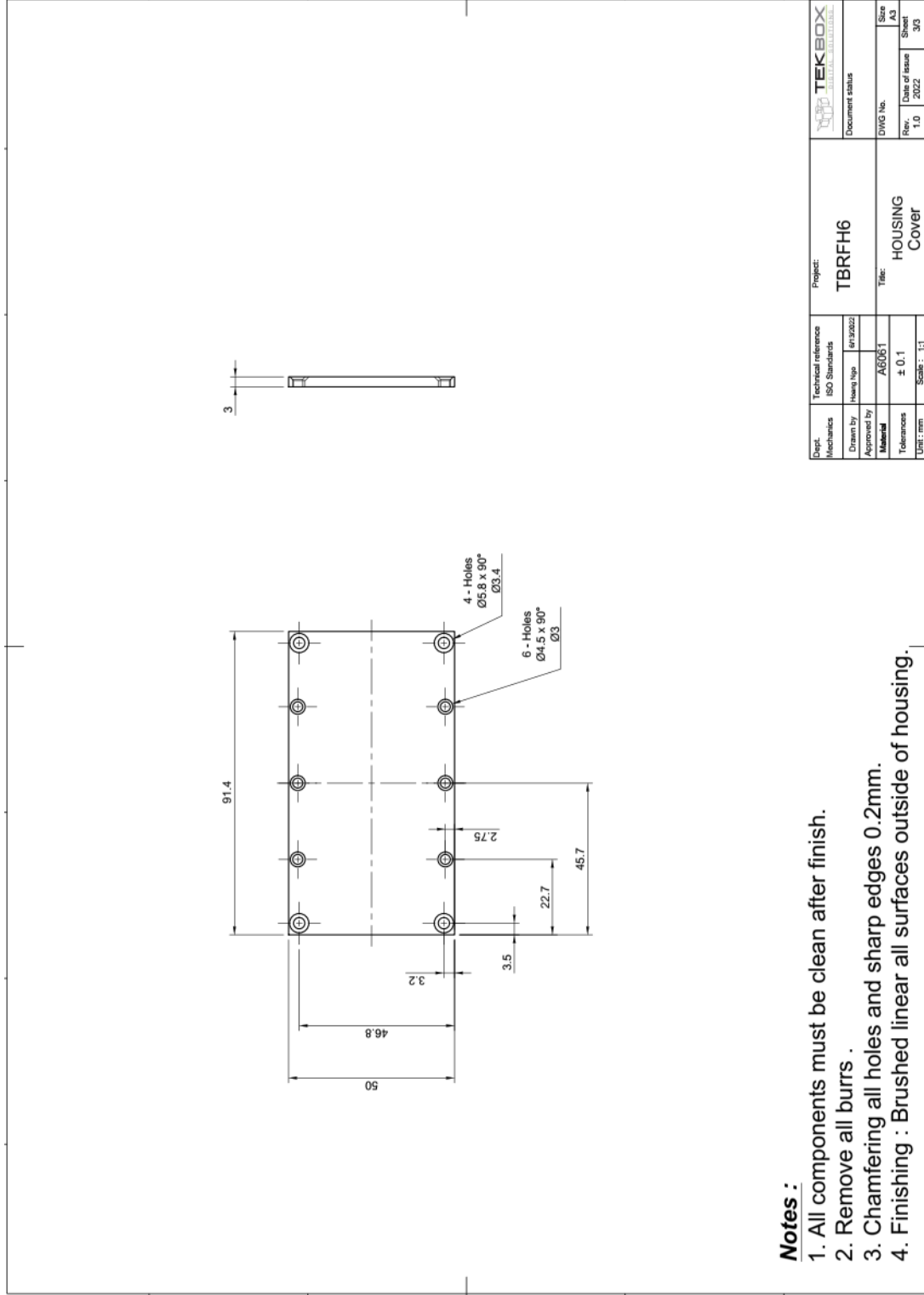
- RF connectors
- Absorbing foam
- Position and number of feed-through capacitors
- Laser engraving
- Surface finishing

RF HOUSINGS

3 Mechanical drawings



RF HOUSINGS



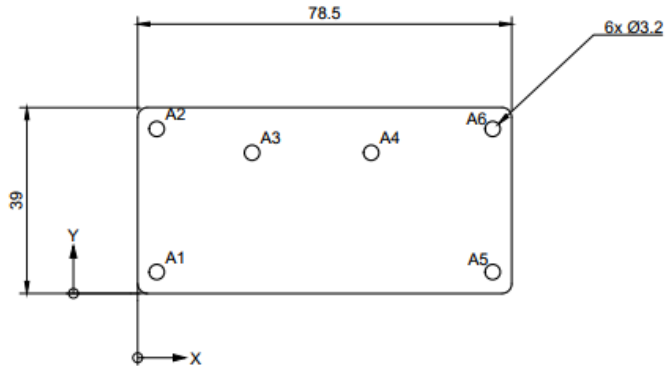
Notes :

1. All components must be clean after finish.
2. Remove all burrs .
3. Chamfering all holes and sharp edges 0.2mm.
4. Finishing : Brushed linear all surfaces outside of housing.

Dept. Mechanics	Technical reference ISO Standards	Project: TBRFH6	TEKBOX DIGITAL SOLUTIONS
Drawn by	Revision (en) 3/2022	Document status	
Approved by	Material A6061	DWG No.	
Tolerance ± 0.1	Scale: 1:1	Date of issue 2022	Sheet 30
		Title: HOUSING Cover	

RF HOUSINGS

*Recommended PCB Dimension
PCB thickness : 1.4mm



A6	74.5	34.5
A5	74.5	4.5
A4	49	29.5
A3	24	29.5
A2	4	34.5
A1	4	4.5
Hole	X Dim	Y Dim
Hole Table		

4 Ordering Information

Part Number	Description
TBRFH6	50 x 91.4 x 18 mm RF housing, pre-assembled with SMA-female connectors and feed through capacitor

5 History

Version	Date	Author	Changes
1.0	23.08.2022	Minh Nguyen	Creation of the document
1.1	07.02.2023	Minh Nguyen	Update drawing (Add Recommended PCB dimension)